



**AgriVision**  
solutions

## ***Intensive Soil Management***

---



Grower:

Farm:

Field:



Soil Type	Soil Name	Area (ac)
50001	Armstrong loam, 5 to 9 percent slopes, eroded	30.19
10151	Wakenda silt loam, 2 to 5 percent slopes	17.47
30120	Lagonda silty clay loam, 5 to 9 percent slopes, eroded	16.21
13629	Colo silt loam, 1 to 4 percent slopes, occasionally flooded	12.77
60196	Newcomer loam, 9 to 14 percent slopes, eroded	13.20

Grower:

Farm:

Field:



Date: 2019-01-03

Lab: Midwest Labs

Area: 89.83 acres



Location	Grower	Farm	Field	Area	Centroid
Agrivision Solutions				89.83 acres	



	Min	Max	Avg
P	2.0	90.0	12.4
Bray P1	2.0	90.0	12.4
Bray P2	3.0	121	15.9
K	91.0	486	132
Mg	142	576	306
Ca	1169	2223	1654
Na	181	266	224
S	7.0	15.0	8.9
Zn	0.20	5.0	0.90
pH	5.5	7.3	6.0
bpH	6.5	7.1	6.7
OM	1.0	4.4	3.1
CEC	10.1	18.9	13.3
%K	1.9	8.9	2.6
%Mg	11.4	27.7	18.7
%Ca	46.8	69.6	62.4
%H	0.00	26.0	15.9
HMeq	0.00	4.5	2.1
%Na	6.0	6.1	6.0

Sample Date: 2019-01-03      Soil Lab: Midwest Labs

ID	p ppm	Bray P1 ppm	Bray P2 ppm	K ppm	Mg ppm	Ca ppm	Na ppm	S ppm	Zn ppm	pH	bpH	OM %	CEC	%K %	%Mg %	%Ca %	%H %	HMeq meq	%Na %
2528	8.0	8.0	9.0	130	344	1929	--	8.0	0.60	6.3	6.8	4.2	14.3	2.3	20.0	67.4	10.3	1.5	--
2529	9.0	9.0	11.0	127	213	1445	--	7.0	0.50	6.3	6.8	3.3	10.4	3.1	17.1	69.5	10.3	1.1	--
2530	6.0	6.0	8.0	105	311	1846	--	7.0	0.40	6.3	6.8	3.3	13.5	2.0	19.2	68.4	10.4	1.4	--
2531	15.0	15.0	17.0	104	244	1587	--	7.0	0.50	6.3	6.8	2.7	11.4	2.3	17.8	69.6	10.3	1.2	--
2532	3.0	3.0	4.0	157	561	1884	--	11.0	0.20	6.1	6.7	2.5	16.9	2.4	27.7	55.7	14.2	2.4	--
2533	15.0	15.0	19.0	106	242	1401	--	9.0	0.70	5.8	6.7	3.3	11.5	2.4	17.5	60.9	19.2	2.2	--
2534	90.0	90.0	121	486	383	1922	--	9.0	3.7	7.3	7.1	4.4	14.0	8.9	22.8	68.3	0.00	0.00	--
2535	22.0	22.0	31.0	193	318	1642	--	9.0	5.0	6.1	6.7	3.5	13.2	3.7	20.1	62.2	14.0	1.8	--
2536	6.0	6.0	9.0	97.0	243	1425	--	9.0	1.7	5.7	6.7	3.0	11.9	2.1	17.0	59.9	21.0	2.5	--
2537	10.0	10.0	13.0	144	319	1800	--	9.0	3.1	6.0	6.7	4.1	14.1	2.6	18.9	63.8	14.7	2.1	--
2538	7.0	7.0	10.0	91.0	238	1293	--	11.0	0.80	5.6	6.7	2.6	11.4	2.0	17.4	56.7	23.9	2.7	--
2539	18.0	18.0	21.0	150	267	1525	--	10.0	0.70	5.6	6.6	3.9	13.3	2.9	16.7	57.3	23.1	3.1	--
2540	5.0	5.0	7.0	157	421	2223	--	11.0	0.70	5.9	6.6	3.3	18.1	2.2	19.4	61.4	17.0	3.1	--



ID	P ppm	Bray P1 ppm	Bray P2 ppm	K ppm	Mg ppm	Ca ppm	Na ppm	S ppm	Zn ppm	pH	bpH	OM %	CEC	%K %	%Mg %	%Ca %	%H %	HMeq meq	%Na %
2541	7.0	7.0	8.0	115	406	1947	--	9.0	0.60	6.1	6.7	3.5	15.6	1.9	21.7	62.4	14.0	2.2	--
2542	11.0	11.0	13.0	107	341	1674	--	10.0	0.50	5.7	6.6	3.4	14.6	1.9	19.5	57.3	21.3	3.1	--
2543	8.0	8.0	18.0	98.0	300	1721	--	7.0	0.60	6.0	6.7	3.9	13.4	1.9	18.7	64.2	15.2	2.0	--
2544	17.0	17.0	19.0	146	297	1703	--	7.0	0.70	5.9	6.7	4.3	13.7	2.7	18.1	62.2	17.0	2.3	--
2545	7.0	7.0	10.0	110	296	1936	--	7.0	0.80	6.1	6.7	4.0	14.4	2.0	17.1	67.2	13.7	2.0	--
2546	10.0	10.0	12.0	129	478	2096	--	9.0	0.30	6.0	6.7	3.0	17.4	1.9	22.9	60.2	15.0	2.6	--
2547	13.0	13.0	15.0	105	234	1503	--	7.0	0.40	5.8	6.7	2.4	12.0	2.2	16.2	62.6	19.0	2.3	--
2548	7.0	7.0	8.0	94.0	210	1608	--	7.0	0.50	6.0	6.7	2.9	11.8	2.0	14.8	68.1	15.1	1.8	--
2549	6.0	6.0	7.0	126	142	1386	--	8.0	0.40	5.8	6.7	2.3	10.4	3.1	11.4	66.6	18.9	2.0	--
2550	14.0	14.0	15.0	112	229	1169	--	9.0	0.40	5.7	6.7	2.8	10.1	2.8	18.9	57.9	20.4	2.1	--
2551	17.0	17.0	22.0	118	158	1234	--	9.0	0.50	5.6	6.7	2.7	10.2	3.0	12.9	60.5	23.6	2.4	--
2552	12.0	12.0	13.0	123	168	1213	--	9.0	0.70	5.6	6.7	2.5	10.2	3.1	13.7	59.5	23.7	2.4	--
2553	15.0	15.0	21.0	94.0	235	1627	--	11.0	1.3	5.8	6.7	2.8	12.7	1.9	15.4	64.1	18.6	2.4	--
2554	10.0	10.0	11.0	110	231	1455	--	9.0	0.80	6.0	6.7	2.4	11.2	2.5	17.2	65.0	15.3	1.7	--
2555	3.0	3.0	5.0	108	256	1246	--	8.0	0.50	5.8	6.7	2.2	10.6	2.6	20.1	58.8	18.5	2.0	--
2556	6.0	6.0	9.0	161	576	2169	266	15.0	0.30	6.4	6.7	2.6	18.9	2.2	25.4	57.4	8.9	1.7	6.1
2557	14.0	14.0	15.0	98.0	341	1798	--	7.0	0.40	6.3	6.8	2.5	13.5	1.9	21.0	66.6	10.5	1.4	--
2558	8.0	8.0	10.0	111	380	1781	181	7.0	0.20	7.3	7.1	1.0	13.1	2.2	24.2	67.6	0.00	0.00	6.0
2559	2.0	2.0	3.0	138	518	1611	--	14.0	0.30	5.5	6.5	2.0	17.2	2.1	25.1	46.8	26.0	4.5	--
2560	16.0	16.0	17.0	116	250	1824	--	7.0	0.70	5.7	6.6	3.8	14.6	2.0	14.3	62.5	21.2	3.1	--
2561	5.0	5.0	8.0	108	248	1615	--	9.0	1.1	5.9	6.7	2.9	12.5	2.2	16.5	64.6	16.7	2.1	--

# Soil Test Analysis Color Key

ph	Low	0-5.2	Potassium (K) ppm	Low	0-40	
		5.2-5.7			40-80	
		5.7-6.2			80-120	
	Optimum	6.2-6.6		Optimum	120-150	
		6.6-6.7			150-200	
	Excessive	7.0-12		Excessive	200-250	
			250-1300			
Eq Humic Matter (Hmeq) meq/100g	Low	0-1	Base Saturation - Potassium (%K) %	Low	0-1.5	
		1.0-2.0			1.5-2.0	
		2.0-3.0			2.0-2.8	
	Optimum	3.0-4.0		Optimum	2.8-4.0	
		4.0-5.0			4.0-6.0	
	Excessive	5.0-10		Excessive	6.0-30	
Phosphorus (Bray P1) ppm	Low	0-5	Sulfur (S) ppm	Low	0-5	
		5.-12			5.-10	
		12.-18			10.-15	
	Optimum	18.-27		Optimum	15.-20	
		27.-35			20.-25	
	Excessive	35.-200		Excessive	25.-90	
Phosphorus (Bray P2) ppm	Low	0-10	Zinc (Zn) ppm	Low	0-0.5	
		10.-24			0.5-1	
		24.-36			1-2.5	
	Optimum	36.-50		Optimum	2.5-4	
		50.-70			4-6.2	
	Excessive	70.-400		Excessive	6.2-15	
Calcium (Ca) ppm	Low	0-500	Base Saturation - Calcium (%Ca) %	Low	0-65	
		500-1000			Optimum	65-75
		1000-1500				Excessive
	Optimum	1500-2000				
		2000-2500				
	Excessive	2500-8000				

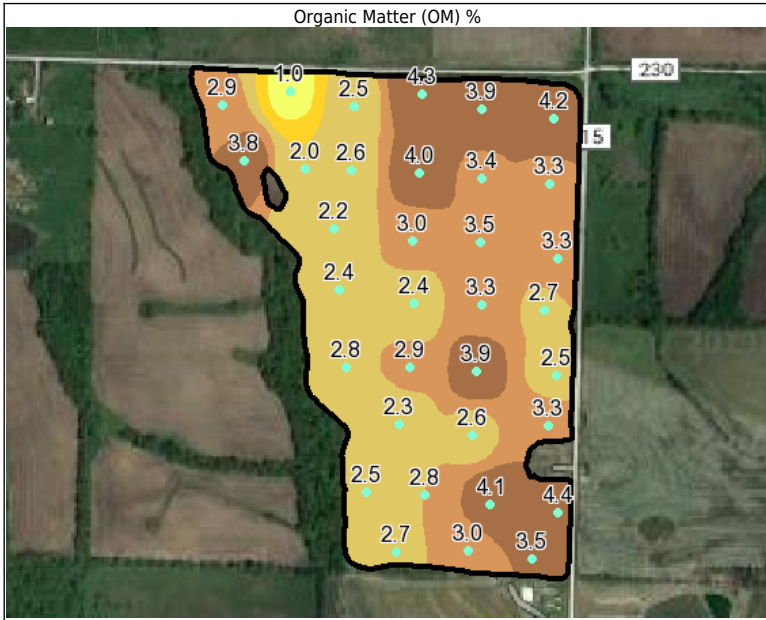
# Soil Test Analysis Color Key

<b>Magnesium (Mg) ppm</b>		<b>Base Saturation - Magnesium (%Mg) %</b>	
Low	0-37	Low	0-6
	37-75		6.-9
Optimum	75-120	9.-12	
	120-250	Optimum 12.-18	
	250-375	18.-25	
Excessive	375-1000	Excessive 25.-60	
<b>Base Saturation - Hydrogen (%H) %</b>		<b>Organic Matter (OM) %</b>	
Neutral	0-3	Very Low	0-1.2
Slightly Neutral	3.-16		1.2-2
Excessive	16.-40		2-2.8
		(Higher The % The Better)	2.8-3.5
			3.5-5
			5.-7
<b>Boron (B) ppm</b>		<b>Copper (Cu) ppm</b>	
Low	0-0.3	Low	0-0.43
	0.3-0.8		0.43-0.86
Optimum	0.8-1.5	0.86-1.29	
	1.5-2.2	1.29-1.72	
Excessive	2.2-3	Optimum 1.72-2.15	
		2.15-2.58	
		Excessive 2.58-50	
<b>Iron (Fe) ppm</b>		<b>Manganese (Mn) ppm</b>	
Low	0-6.71	Low	0-6.71
	6.71-13.42		6.71-13.42
	13.42-20.13		13.42-20.13
	20.13-26.84		20.13-26.84
Optimum	26.84-33.55	Optimum 26.84-33.55	
	33.55-40.26	33.55-40.26	
	40.26-200	Excessive 40.26-200	
Excessive			

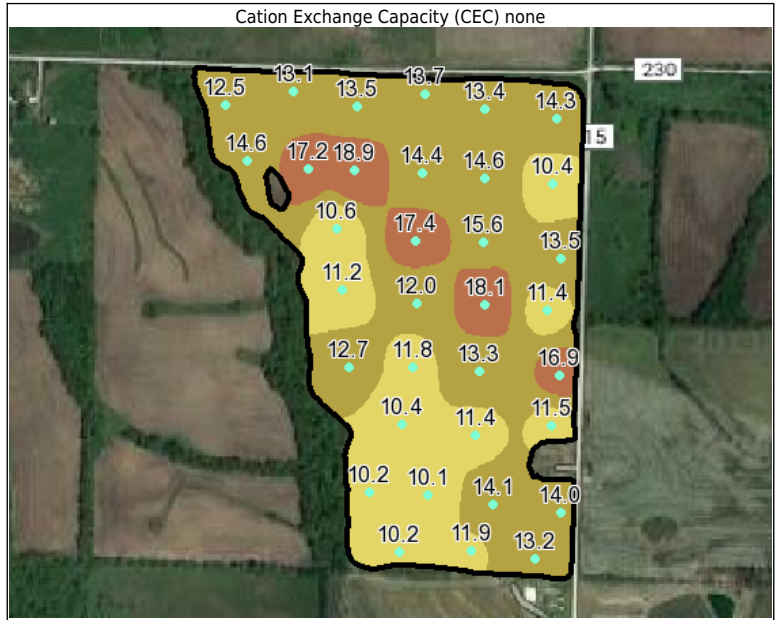
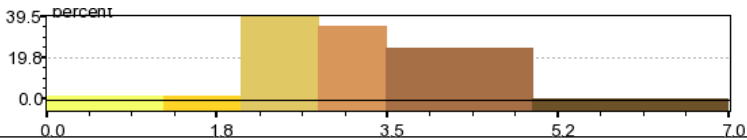


Grower:  
Farm:  
Field:  
Area: 89.83 acres

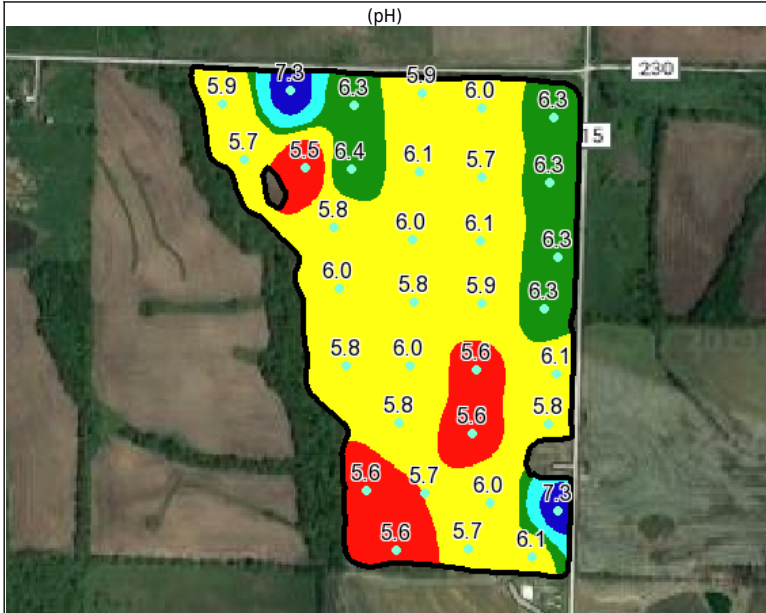
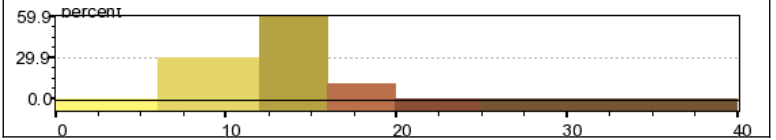
Lab: Midwest Labs  
Date: 2019-01-03  
Layer ID: 2029315



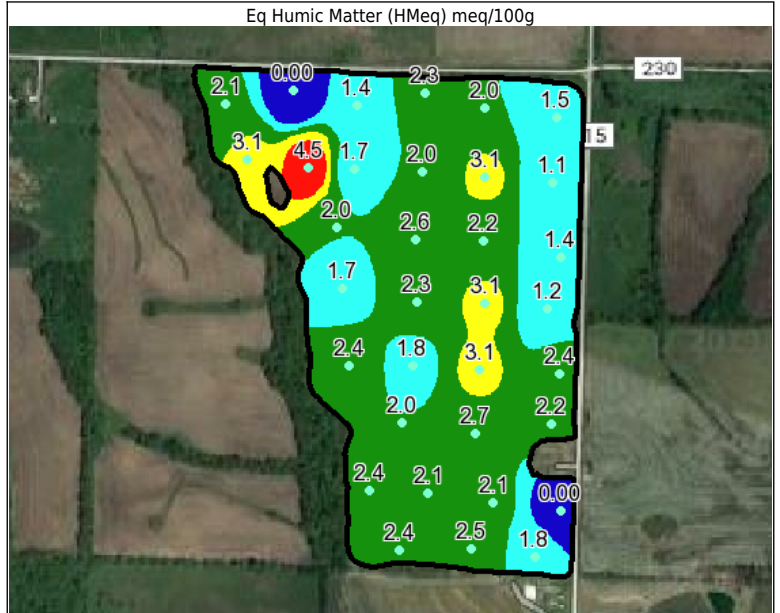
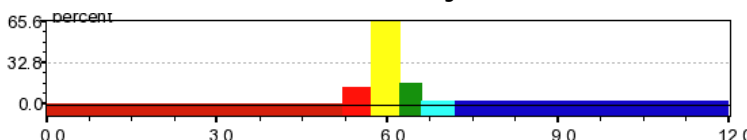
Min: 1.0 Max: 4.4 Avg: 3.1



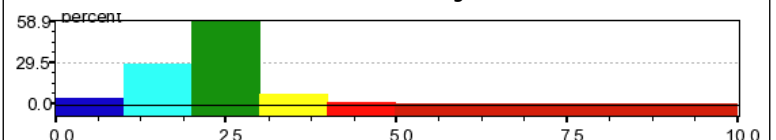
Min: 10.1 Max: 18.9 Avg: 13.3



Min: 5.5 Max: 7.3 Avg: 6.0

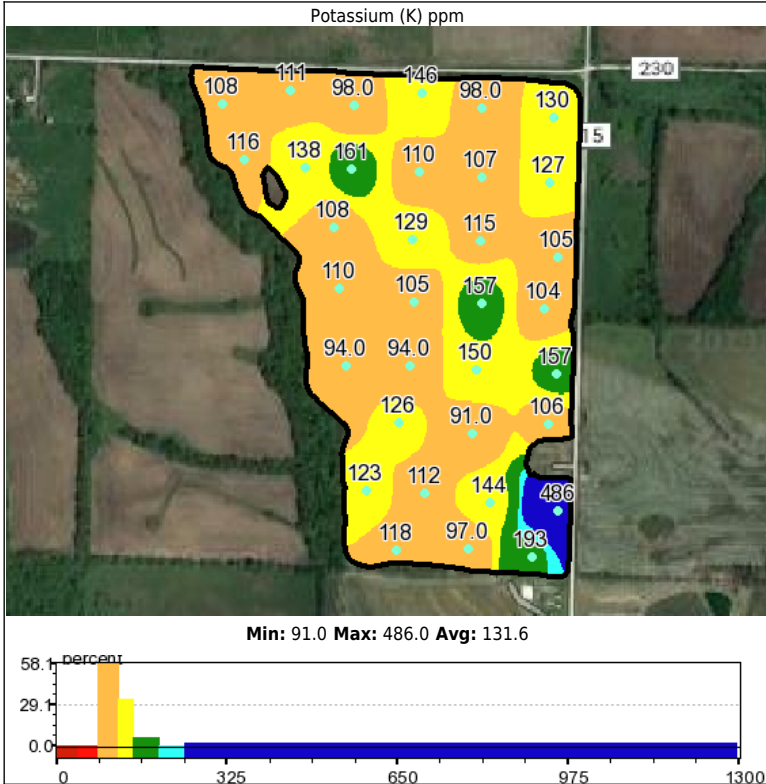
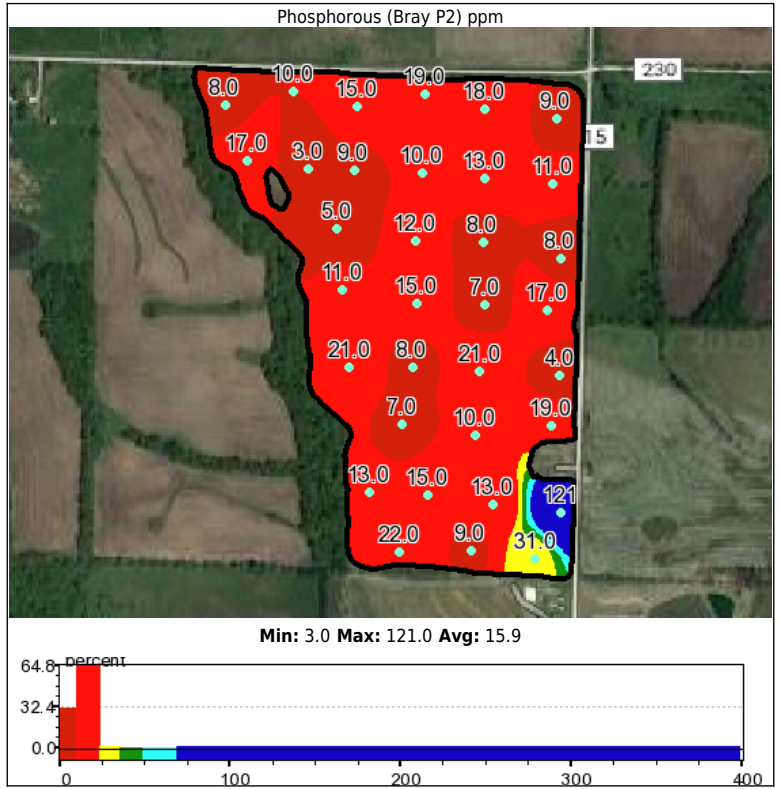
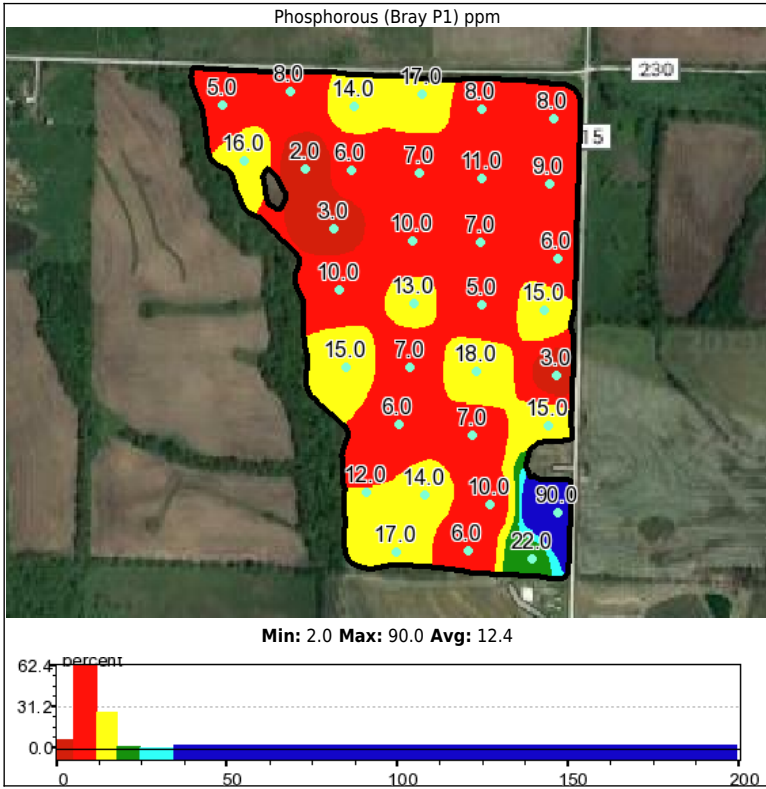


Min: 0.0 Max: 4.5 Avg: 2.1



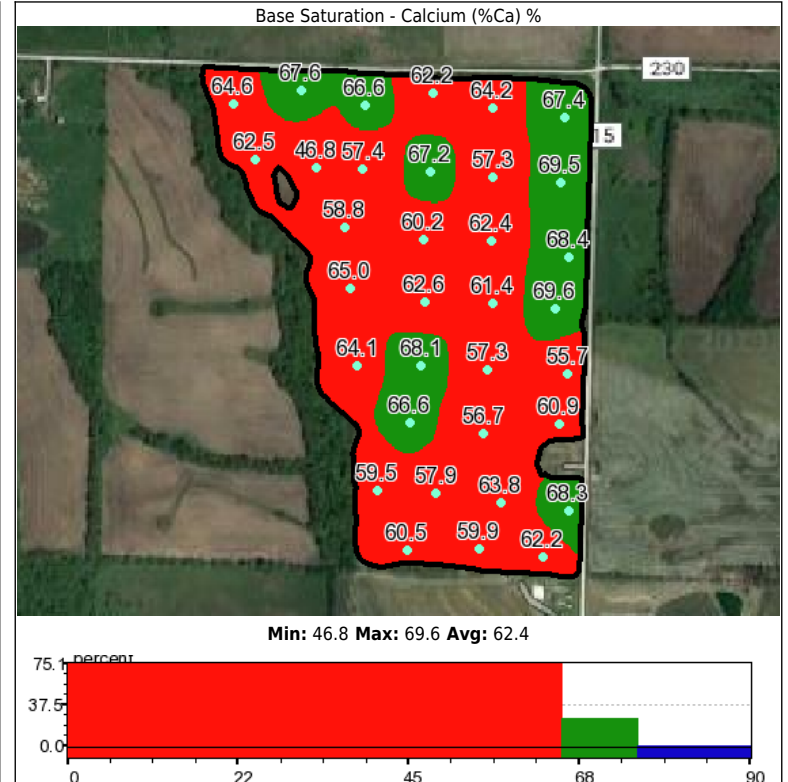
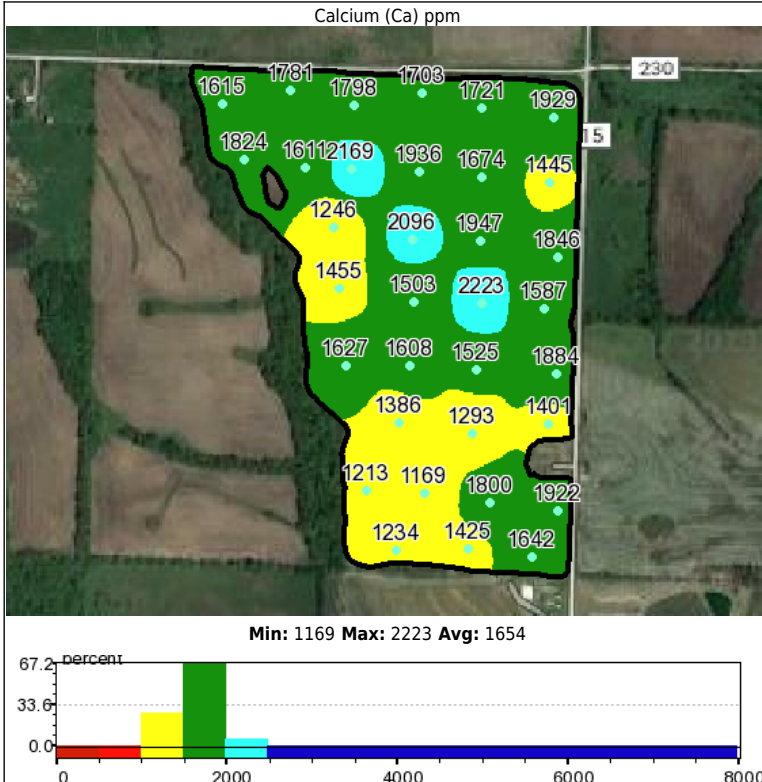
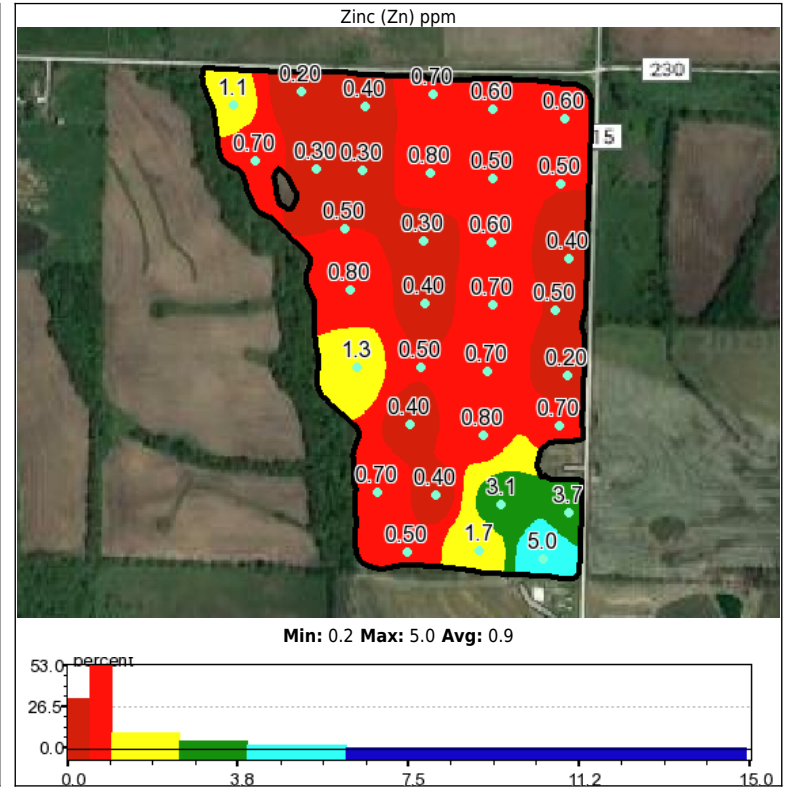
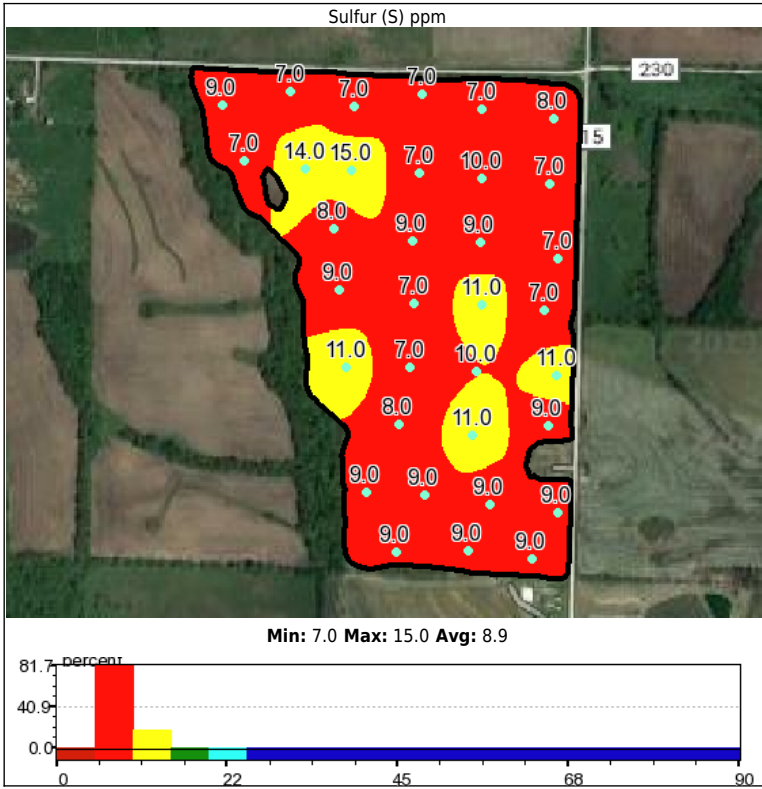
Grower:  
Farm:  
Field:  
Area: 89.83 acres

Lab: Midwest Labs  
Date: 2019-01-03  
Layer ID: 2029315



Grower:  
Farm:  
Field:  
Area: 89.83 acres

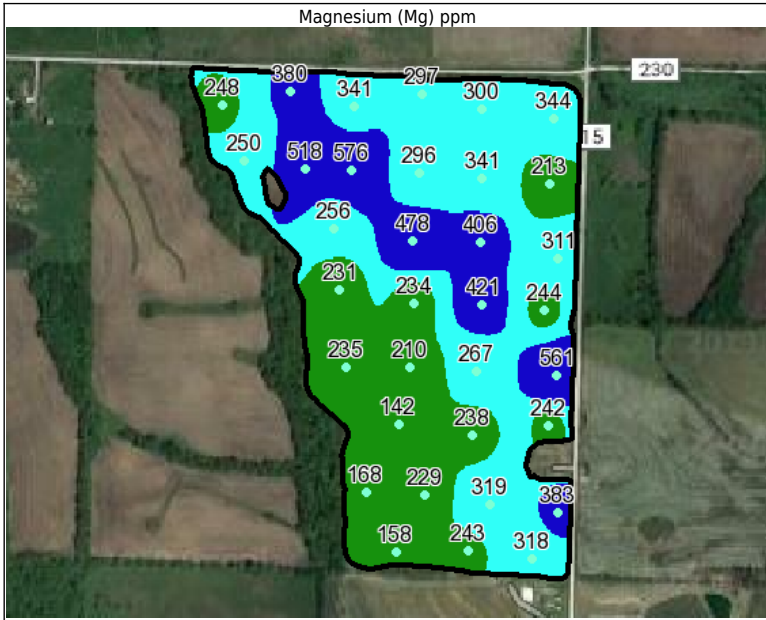
Lab: Midwest Labs  
Date: 2019-01-03  
Layer ID: 2029315



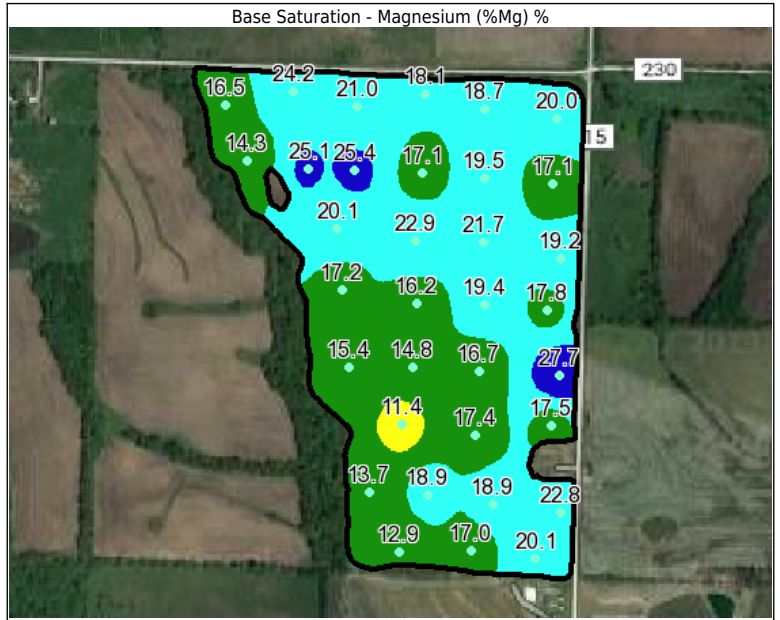
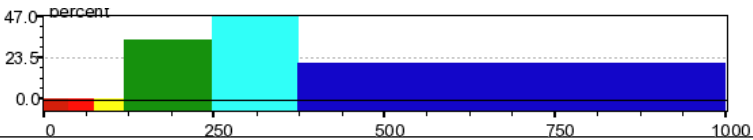


Grower:  
Farm:  
Field:  
Area: 89.83 acres

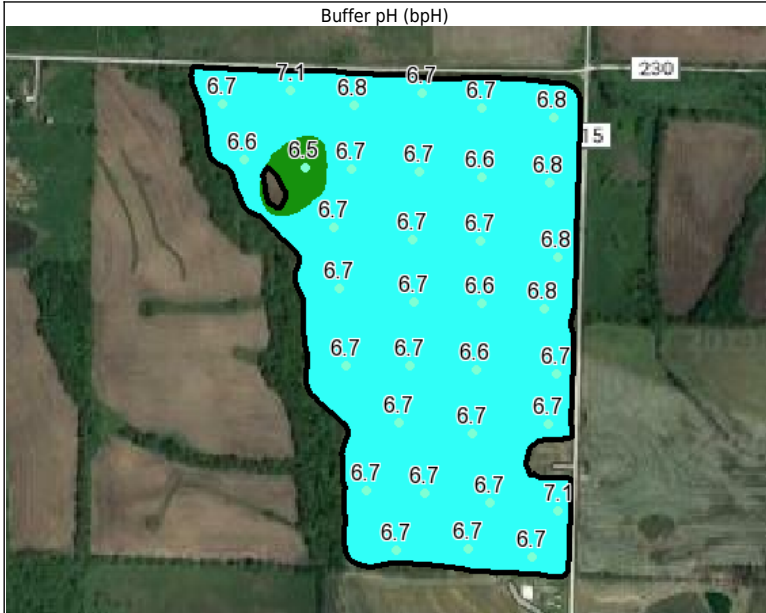
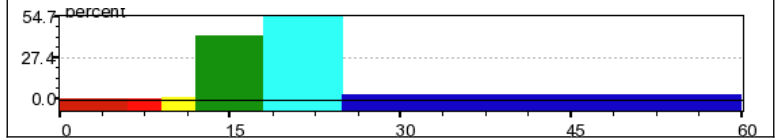
Lab: Midwest Labs  
Date: 2019-01-03  
Layer ID: 2029315



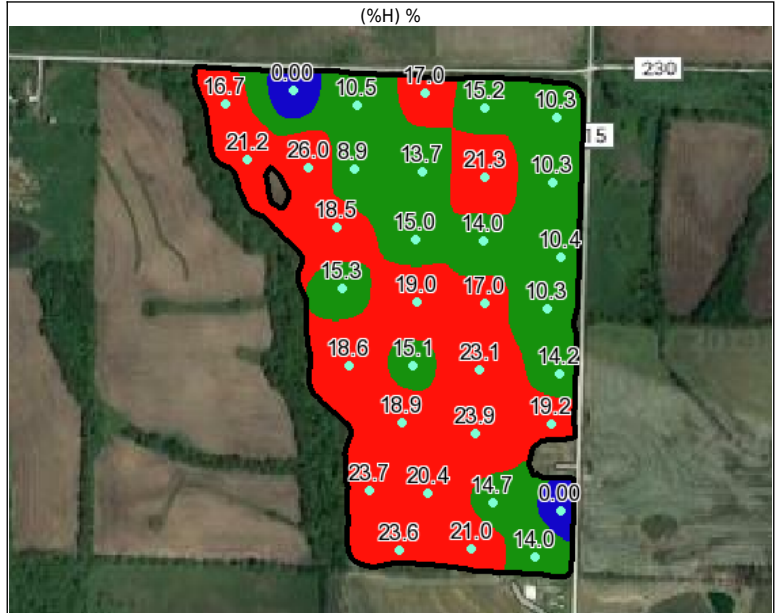
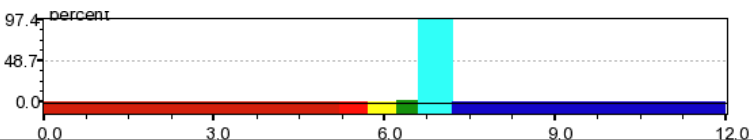
Min: 142.0 Max: 576.0 Avg: 305.8



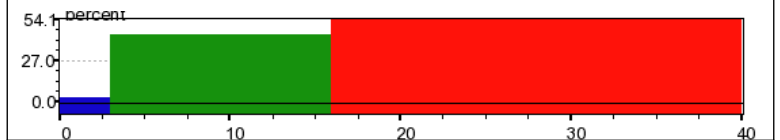
Min: 11.4 Max: 27.7 Avg: 18.7



Min: 6.5 Max: 7.1 Avg: 6.7



Min: 0.0 Max: 26.0 Avg: 15.9

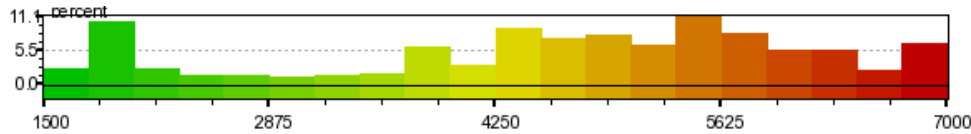
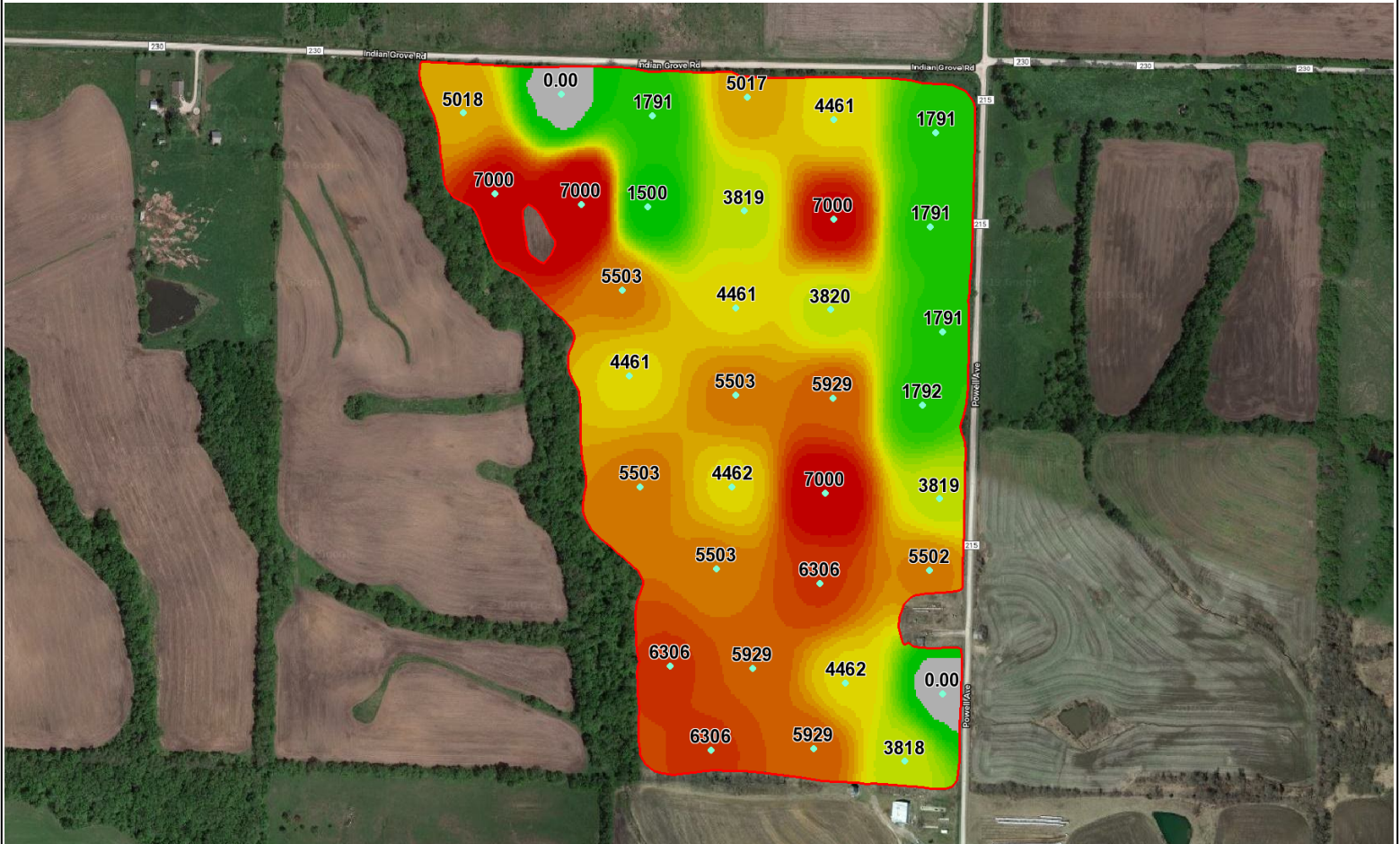


Grower:

Farm:

Field(s):

**Lime 400 ENM - Fertilizer Application (lbs/ac)**



Lab: Midwest Labs

Custom Eq: Univ of MO Recs

Commodity: Soybeans

Sample Date: 2019-01-03

Constraints:

Years Buildup: 4 Yield Goal: 0 bu/ac

Max Rate: 7000.0 lbs/ac Multiplier: N/A

Min Rate: 1500.0 lbs/ac Subtract: N/A

Switch Rate: 500.0 lbs/ac

Minimum Application Rate: 1500.0 lbs/ac  
 Maximum Application Rate: 7000.0 lbs/ac  
 Average Application Rate: 4649.97 lbs/ac  
 Application Area: 88.11 ac  
 Average Field Rate: 4550.61 lbs/ac  
 Total Area: 90.04 ac

Total Product: 409715.83 lbs  
 Total Product Bulk: 204.86 ton  
 Product Cost / Bulk: \$0.0/ton  
 Total Product Price: \$0.0  
 Application Cost / Area: \$0.0/ac  
 Total Application Cost: \$0.0  
 Total Cost: \$0.0

# Fertilizer Application Summary

Grower:  
Farm:  
Field(s):

Commodity: Soybeans  
Labs: Midwest Labs

Selected Parameters					
Product	Rec %	Max Rate	Min Rate	+/-	Switch Rate
Lime 400 ENM	100	7000.0 lbs/ac	1500.0 lbs/ac	0.00	500.0 lbs/ac

Product	Wt App	Wt App Bulk	Applied Area	Product Cost	Est. Cost	Est. Cost/Area
Lime 400 ENM	409715.83 (lbs)	204.86 ton	88.11	\$0.0/ton	\$0.0	\$0.0/ac
Application				\$0.0 /ac	\$0.0	\$0.0/ac
Totals					\$0.00	\$0.0/ac

Field Summary					
Field	PLS ID	FSA ID	County	Area	Centroid
		--		89.83 ac	

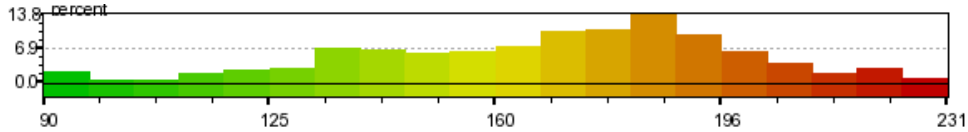
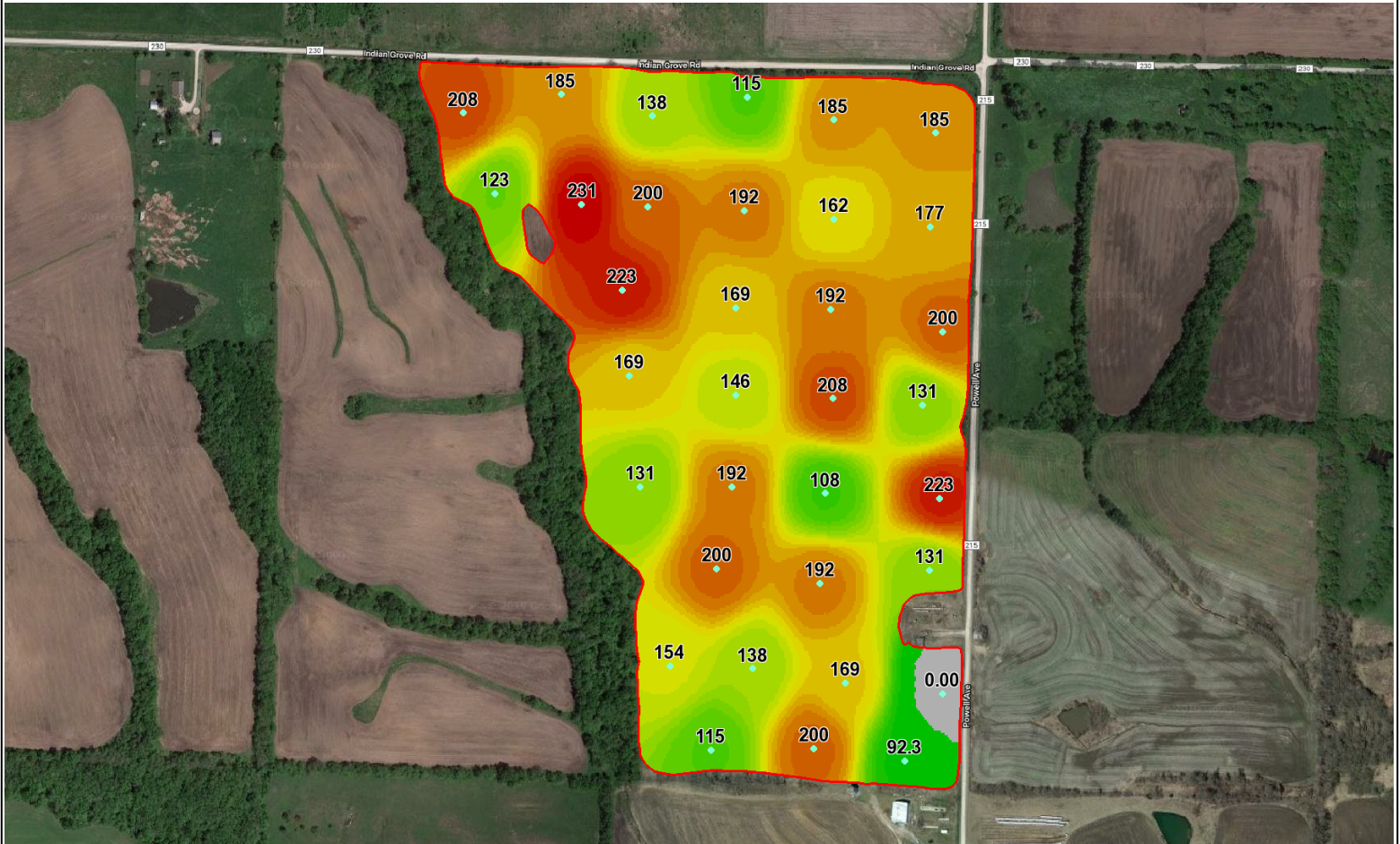


Grower:

Farm:

Field(s):

**MAP 11-52-0 - Fertilizer Application (lbs/ac)**



Lab: Midwest Labs

Custom Eq: AVS UofM Recs

Commodity: Soybeans

Sample Date: 2019-01-03

**Constraints:**

P Build Level: 40 lbs/ac P Maint Level: 70 lbs/ac  
 Years Buildup: 4 Yield Goal: 60 bu/ac

Max Rate: 350.0 lbs/ac Multiplier: N/A  
 Min Rate: 90.0 lbs/ac Subtract: N/A  
 Switch Rate: 30.0 lbs/ac

Minimum Application Rate: 90.0 lbs/ac  
 Maximum Application Rate: 230.7 lbs/ac  
 Average Application Rate: 169.09 lbs/ac  
 Application Area: 88.87 ac  
 Average Field Rate: 166.90 lbs/ac  
 Total Area: 90.04 ac

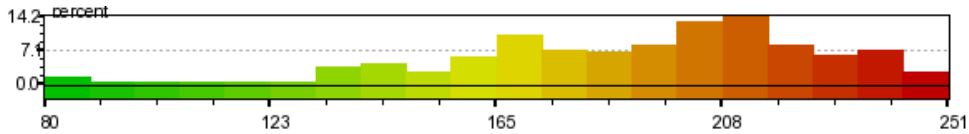
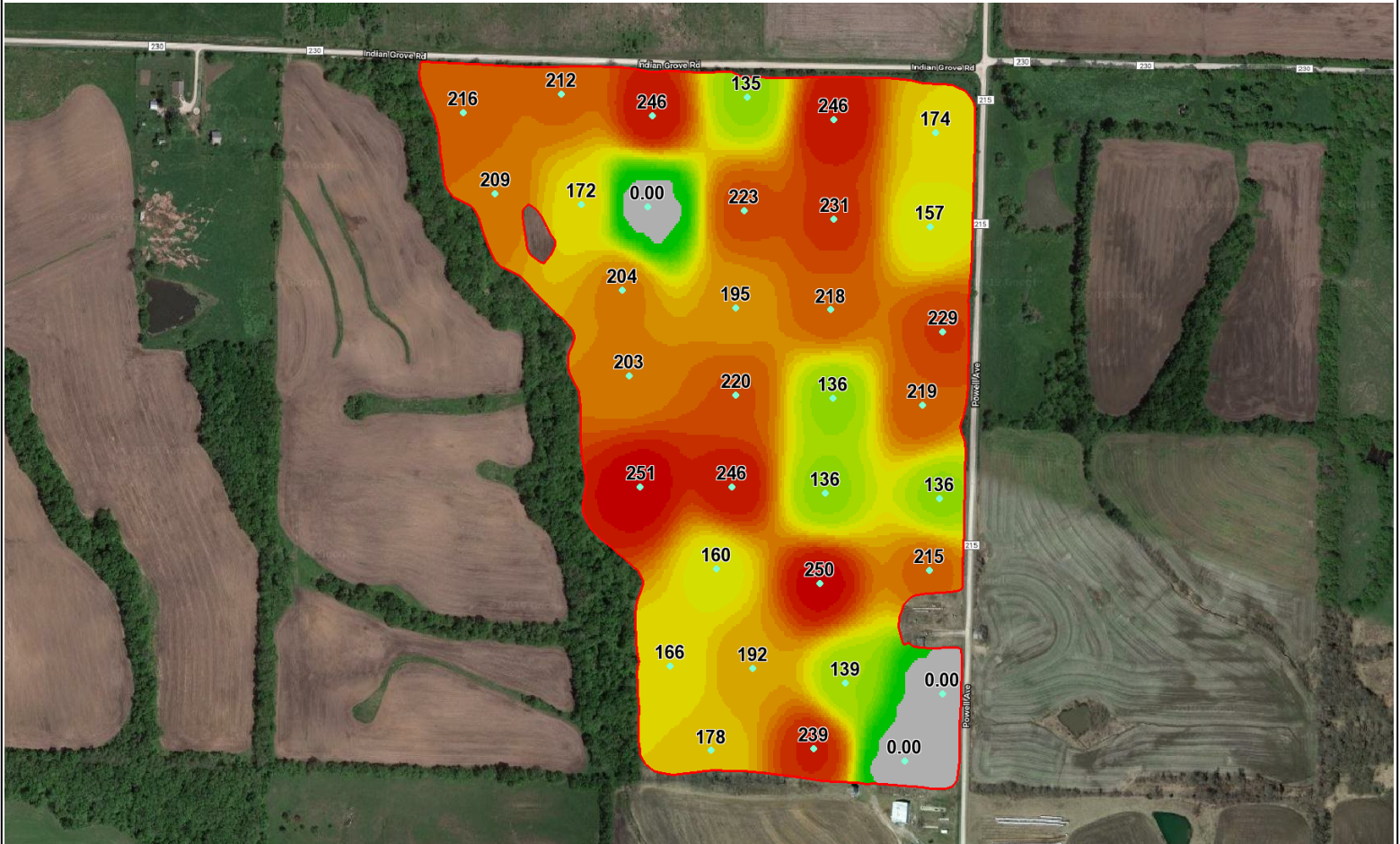
Total Product: 15027.32 lbs  
 Total Product Bulk: 7.51 ton  
 Product Cost / Bulk: \$0.0/ton  
 Total Product Price: \$0.0  
 Application Cost / Area: \$0.0/ac  
 Total Application Cost: \$0.0  
 Total Cost: \$0.0

Grower:

Farm:

Field(s):

**Potash 0-0-62 - Fertilizer Application (lbs/ac)**



Lab: Midwest Labs

Custom Eq: AVS UofM Recs

Commodity: Soybeans

Sample Date: 2019-01-03

Constraints:

K Build Level: 220 lbs/ac    K Maint Level: 320 lbs/ac  
 Years Buildup: 4            Yield Goal: 60 bu/ac

Max Rate: 300.0 lbs/ac    Multiplier: N/A  
 Min Rate: 80.0 lbs/ac    Subtract: N/A  
 Switch Rate: 30.0 lbs/ac

Minimum Application Rate: 80.0 lbs/ac  
 Maximum Application Rate: 251.0 lbs/ac  
 Average Application Rate: 193.84 lbs/ac  
 Application Area: 86.21 ac  
 Average Field Rate: 185.60 lbs/ac  
 Total Area: 90.04 ac

Total Product: 16710.68 lbs  
 Total Product Bulk: 8.36 ton  
 Product Cost / Bulk: \$0.0/ton  
 Total Product Price: \$0.0  
 Application Cost / Area: \$0.0/ac  
 Total Application Cost: \$0.0  
 Total Cost: \$0.0

# Fertilizer Application Summary

Grower:  
Farm:  
Field(s):

Commodity: Soybeans  
Labs: Midwest Labs

Selected Parameters					
Product	Rec %	Max Rate	Min Rate	+/-	Switch Rate
MAP 11-52-0	100	350.0 lbs/ac	90.0 lbs/ac	0.00	30.0 lbs/ac
Potash 0-0-62	100	300.0 lbs/ac	80.0 lbs/ac	0.00	30.0 lbs/ac

Product	Wt App	Wt App Bulk	Applied Area	Product Cost	Est. Cost	Est. Cost/Area
MAP 11-52-0	15027.32 (lbs)	7.51 ton	88.87	\$0.0/ton	\$0.0	\$0.0/ac
Potash 0-0-62	16710.68 (lbs)	8.36 ton	86.21	\$0.0/ton	\$0.0	\$0.0/ac
Application				\$0.0 /ac	\$0.0	\$0.0/ac
Totals					\$0.00	\$0.0/ac

Field Summary					
Field	PLS ID	FSA ID	County	Area	Centroid
		--		89.83 ac	